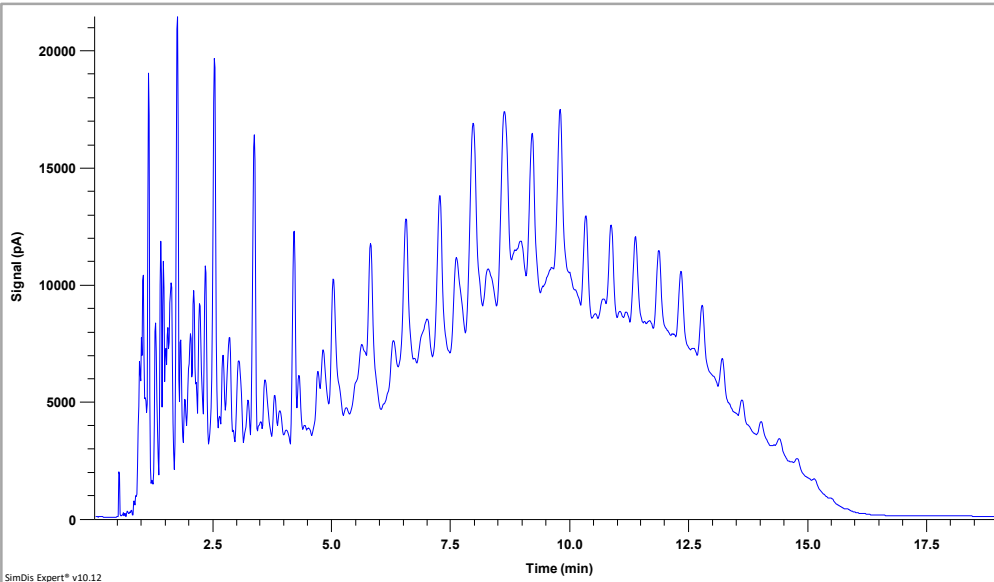


Certificate of Analysis

SD-016-325 Lot # 091719ES



Simulated Distillation Analysis Results				
% Off	Analysis BP (°F)	Accepted BP (°F)	Deviation (°F)	Allowed Deviation (°F)
IBP	238.3	238	-0.3	13.6
5	305.2	304	-1.2	6.8
10	347.8	346	-1.8	7.4
15	392.7	391	-1.7	8.1
20	442.0	440	-2.0	8.8
25	480.8	478	-2.8	-
30	514.3	511	-3.3	8.6
35	541.5	538	-3.5	-
40	566.0	563	-3.0	7.7
45	584.6	581	-3.6	7.7
50	604.9	601	-3.9	7.7
55	621.5	618	-3.5	7.7
60	640.3	636	-4.3	7.7
65	658.5	655	-3.5	7.7
70	679.0	675	-4.0	7.7
75	701.3	698	-3.3	7.7
80	724.3	721	-3.3	7.7
85	748.4	745	-3.4	7.7
90	774.9	772	-2.9	7.7
95	810.7	809	-1.7	9.0
FBP	879.9	875	-4.9	21.2

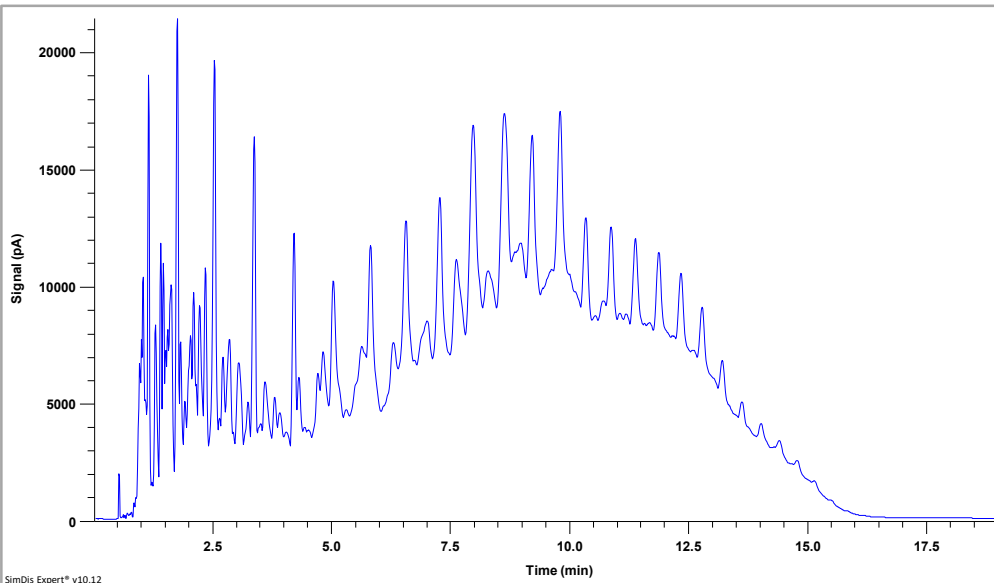
SD-016-325 Reference Gas Oil for ASTM D2887

Lot #: 091719ES Exp: Sept. 2024

Column: SD-002-EX2M (10m x 0.53mm x 0.88µm) Inlet: TPI; 80°C to 350°C at 15°C/min Carrier: UHP He at 20 mL/min (constant flow) Oven: 30°C to 350°C at 15°C/min (5 min final hold) Detector: FID at 360°C Injection Volume: 0.2 µL (neat)

Certificate of Analysis

SD-016-325 Lot # 091719ES



Simulated Distillation Analysis Results				
% Off	Analysis BP (°F)	Accepted BP (°F)	Deviation (°F)	Allowed Deviation (°F)
IBP	238.3	238	-0.3	13.6
5	305.2	304	-1.2	6.8
10	347.8	346	-1.8	7.4
15	392.7	391	-1.7	8.1
20	442.0	440	-2.0	8.8
25	480.8	478	-2.8	-
30	514.3	511	-3.3	8.6
35	541.5	538	-3.5	-
40	566.0	563	-3.0	7.7
45	584.6	581	-3.6	7.7
50	604.9	601	-3.9	7.7
55	621.5	618	-3.5	7.7
60	640.3	636	-4.3	7.7
65	658.5	655	-3.5	7.7
70	679.0	675	-4.0	7.7
75	701.3	698	-3.3	7.7
80	724.3	721	-3.3	7.7
85	748.4	745	-3.4	7.7
90	774.9	772	-2.9	7.7
95	810.7	809	-1.7	9.0
FBP	879.9	875	-4.9	21.2

SD-016-325 Reference Gas Oil for ASTM D2887

Lot #: 091719ES Exp: Sept. 2024

Column: SD-002-EX2M (10m x 0.53mm x 0.88µm) Inlet: TPI; 80°C to 350°C at 15°C/min Carrier: UHP He at 20 mL/min (constant flow) Oven: 30°C to 350°C at 15°C/min (5 min final hold) Detector: FID at 360°C Injection Volume: 0.2 µL (neat)