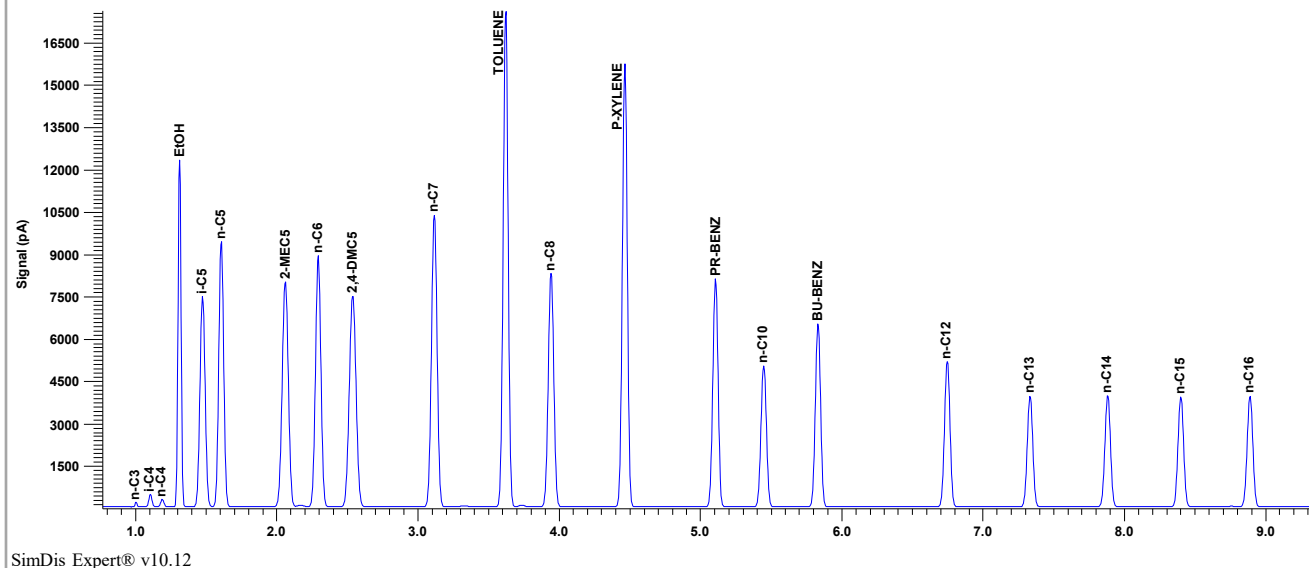


Certificate of Analysis

SD-060 Lot # 111419ES

GRAVIMETRIC MIXTURE MANUFACTURED ON SCALES CALIBRATED TO N.I.S.T. TRACEABLE WEIGHTS
N.I.S.T. TRACEABLE WEIGHT SET NUMBER MT50. NIST TRACEABLE TEST 822/262551-0



SimDis Expert® v10.12

SD-060 Retention Time & Response Factor Standard with EtOH for ASTM D7096

Lot #: 111419ES Exp: Nov. 2024

Column: SD-003 (30m x 0.53mm x 5.0µm) Inlet: S/SL at 250°C with 35:1 split Carrier: UHP He; 5 mL/min (0.5 min hold) to 20 mL/min at 60 mL/min²
Oven: 40°C (1 min hold) to 260°C at 25°C/min (4 min final hold) Detector: FID at 300°C Injection Volume: 1.0 µL

Component		Weight %	Volume %
n-Propane	n-C3	Trace	Trace
Isobutane	i-C4	Trace	Trace
n-Butane	n-C4	Trace	Trace
Ethanol	EtOH	10.23	9.59
Isopentane	i-C5	4.91	5.85
n-Pentane	n-C5	5.81	6.85
2-Methylpentane	2-MEC5	6.29	7.12
n-Hexane	n-C6	6.32	7.08
2,4-Dimethylpentane	2,4-DMC5	6.46	7.11
n-Heptane	n-C7	7.35	7.95
Toluene	TOLUENE	10.49	8.93
n-Octane	n-C8	5.79	6.10
p-Xylene	P-XYLENE	9.13	7.84
n-Propylbenzene	PR-BENZ	5.04	4.32
n-Decane	n-C10	3.46	3.50
n-Butylbenzene	BU-BENZ	4.05	3.48
n-Dodecane	n-C12	3.56	3.52
n-Tridecane	n-C13	2.73	2.67
n-Tetradecane	n-C14	2.77	2.70
n-Pentadecane	n-C15	2.78	2.68
n-Hexadecane	n-C16	2.82	2.70
		100	100



Separation Systems, Inc.

Experts in Gas Chromatography

Phone 850-932-1433

Sales@SeparationSystems.com

www.SeparationSystems.com