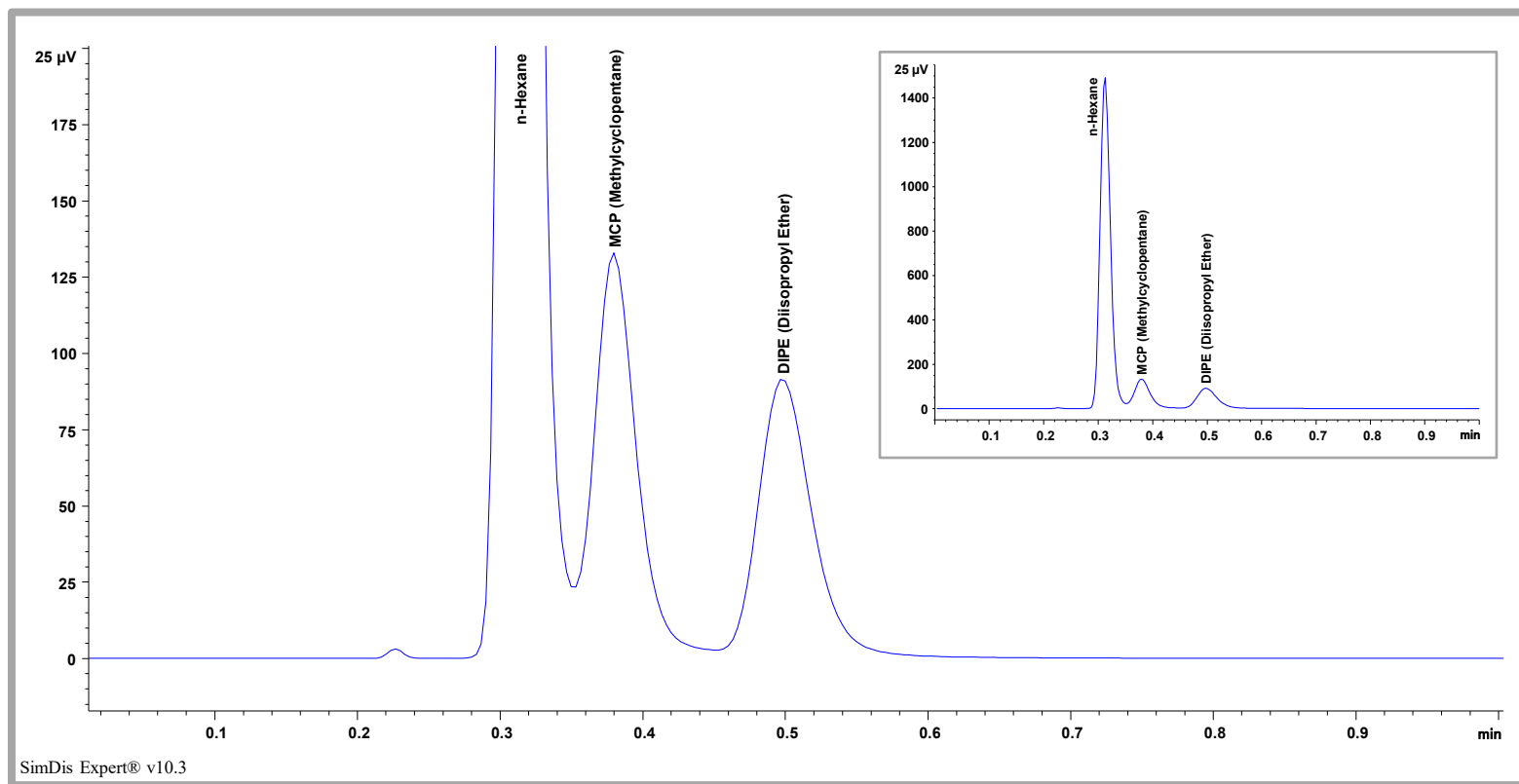


Certificate of Analysis

SD-ASTM-D4815-VB Lot # 080317ES



SD-ASTM-D4815-VB Valve Backflush Mix for ASTM D4815

Lot #: 080317ES Exp: Aug. 2022

Column: 30" x 1/16" TCEP (Pre-column) and 30m x 0.53mm x 3.0µm PDMS (Analytical Column – not used for above chromatogram) **Inlet:** S/SL at 200°C with 25:1 split

Carrier: UHP He at 5 mL/min (inlet) and 3 mL/min (auxiliary) **Oven:** 40°C (2 min hold) to 60°C at 10°C/min (6 min hold) to 100°C at 15°C/min (8 min hold)

Detector: TCD at 225°C **Valve:** 60°C; OFF at 0 min (no switch for above chromatogram) **Injection Volume:** 2.0 µL

 **Separation Systems, Inc.**
Experts in Gas Chromatography

Phone 850-932-1433

Sales@SeparationSystems.com

www.SeparationSystems.com