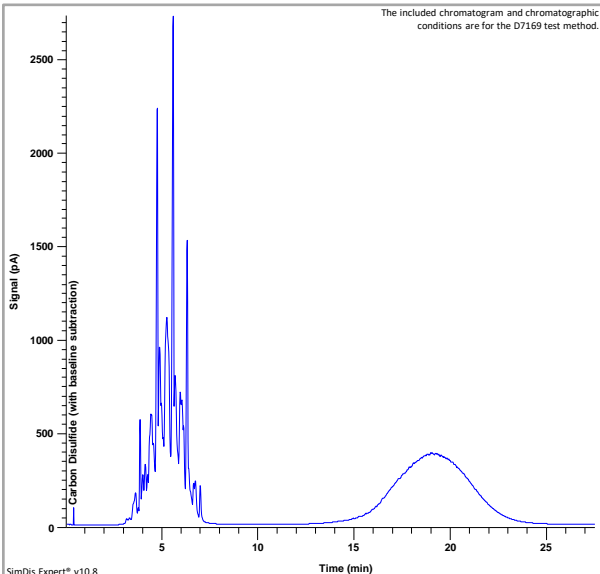


# Certificate of Analysis

SD-025-25 Lot # N/A



Simulated Distillation Analysis Results									
% Off	ASTM Method D6352				ASTM Method D7169				% Off
	Analysis BP (°C)	Accepted BP (°C)	Deviation (°C)	Allowed Deviation (°C)	Analysis BP (°C)	Accepted BP (°C)	Deviation (°C)	Allowed Deviation (°C)	
IBP	184.4	184.1	-0.3	8.0	187.9	186.6	-1.3	1.9	IBP
5	206.8	204.7	-2.1	6.9	207.4	206.2	-1.2	2.2	5
10	216.3	216.0	-0.3	3.0	216.4	215.6	-0.8	1.9	10
15	220.1	219.3	-0.8	2.1	220.0	219.3	-0.7	2.0	15
20	226.9	225.6	-1.3	3.4	226.9	226.0	-0.9	2.0	20
25	231.4	229.8	-1.6	4.0	231.1	230.5	-0.6	2.2	25
30	236.7	235.3	-1.4	4.3	236.8	236.3	-0.5	2.3	30
35	240.1	238.5	-1.6	4.4	239.9	239.2	-0.7	2.7	35
40	248.0	246.8	-1.2	3.6	247.8	247.3	-0.5	2.6	40
45	255.5	254.9	-0.6	2.5	255.3	255.0	-0.3	2.6	45
50	-	-	-	-	-	-	-	-	50
55	498.3	495.6	-2.7	6.2	496.4	495.0	-1.4	5.6	55
60	513.8	511.4	-2.4	4.7	511.8	510.9	-0.9	4.2	60
65	525.9	523.8	-2.1	4.1	523.8	523.0	-0.8	4.0	65
70	536.2	534.2	-2.0	4.1	534.4	533.6	-0.8	3.4	70
75	545.4	543.5	-1.9	4.1	543.8	542.9	-0.9	3.3	75
80	555.2	553.3	-1.9	4.2	553.6	552.7	-0.9	3.5	80
85	565.0	563.2	-1.8	4.1	563.6	562.6	-1.0	3.6	85
90	575.5	573.9	-1.6	4.0	574.4	573.3	-1.1	3.6	90
95	590.2	588.8	-1.4	4.6	589.4	588.2	-1.2	3.6	95
FBP	628.7	628.5	-0.2	7.4	631.7	629.0	-2.7	7.9	FBP

## SD-025-25 Gravimetric Blend #1 for High Temperature Simulated Distillation

Lot #: N/A Exp: N/A

Column: SD-002HTE2 (5.0m x 0.53mm x 0.1µm) Inlet: TPI; 50°C to 425°C at 15°C/min

Carrier: UHP He at 20 mL/min (constant flow) Oven: -20°C to 425°C at 15°C/min (5 min final hold)

Detector: FID at 435°C Injection Volume: 0.2 µL

Cut Point Analysis Results								
Cut Point	Analysis Yield (%)		Accepted Yield (%)		Deviation (%)		Allowed Deviation (%)	
	D6352	D7169	D6352	D7169	D6352	D7169	D6352	D7169
SET - 330°C	49.31	49.34	49.44	49.43	0.13	0.09	0.64	0.58
330°C - EET	50.69	50.66	50.56	50.57	-0.13	-0.09	0.64	0.58

Note: SET = Start Elution Time; EET = End Elution Time